



INTERVALVE® POONAWALLA LTD.

The name says it all



Ball Valves Series Intervalve I8F

Class 600/800, Regular/Full port, Screwed, Socket, Butt Weld Floating design



3-PIECE BALL VALVES / 2-WAY.

- 3-Piece swing-Out Design, Easy In-line Maintenance.
- ISO 5211 Mounting Pad
Allows for mounting of actuator.
- Maintenance free live loaded double sealing stem packing ensures high cycles life and positive sealing.
- Blow-Out Proof Stem.

The 3-piece design is available for various schedule pipes. This type of construction is of swing-out design and easy inline maintenance. By removing body bolts & nuts the complete valve may be lifted out of the line or swing-out by keeping one bolt. The valve can easily swing out of the line providing complete entry and fast disassembly or maintenance. The swing away feature also maintains pipe alignment during inline maintenance. The 3-piece design offers the function of both valve as well as a union. It can be used in screw pipe ends, socket weld pipe ends, butt weld ends, extended butt weld pipe ends. These ball valves can be easily used for automation by using pneumatic and electric actuators.

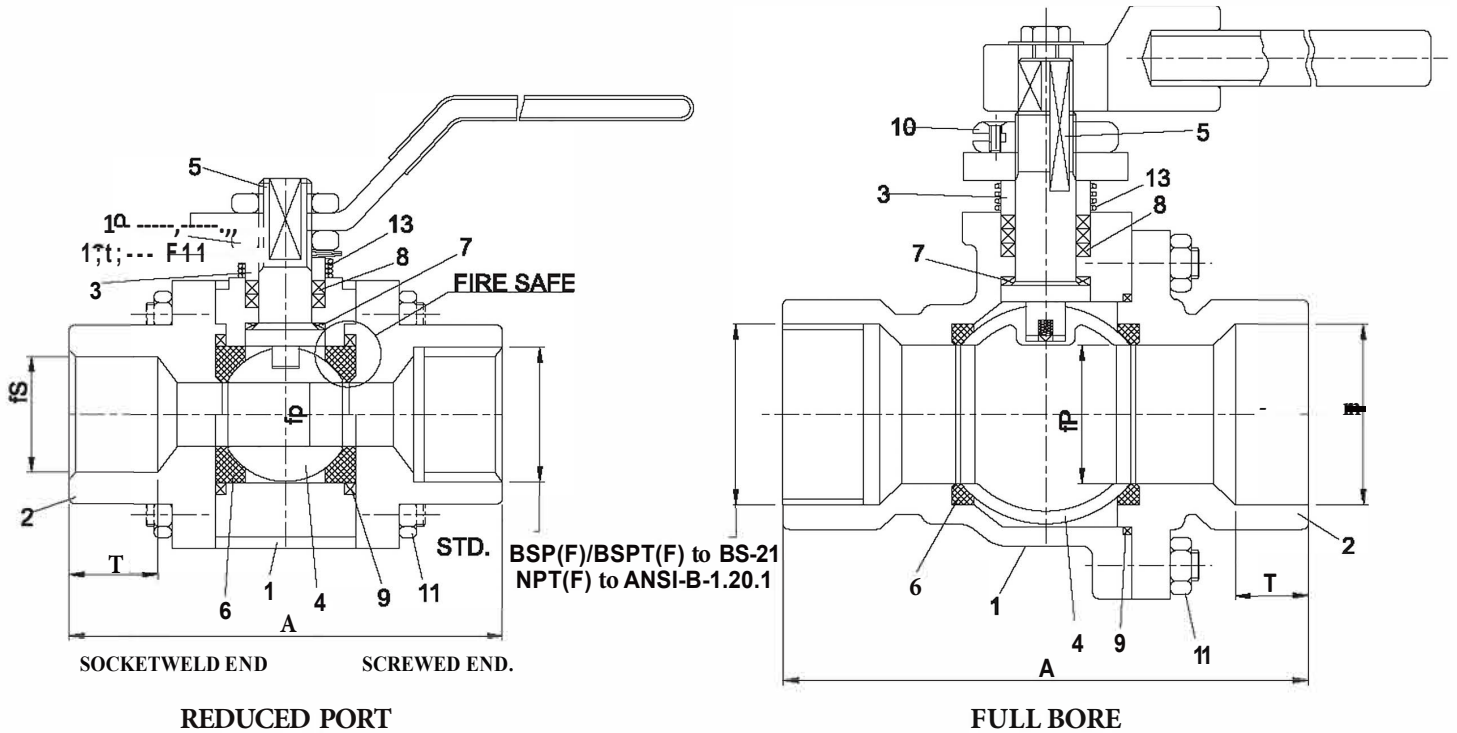
Conformity to codes & standards:

General design & manufacturing.	:	EN-17292 API-6D
Valve face to face dimensions.	:	Manufacturers standard.
Valve inspection & testing	:	EN 12266
	:	Hydro shell: 211 kg/sq.cm
	:	Seat test : 69 kg/sq.cm
	:	Air seat : 7 kg/sq.cm
Special features	:	Fire safe to API-607/6FA Metal to Metal Seat

Technical specification:

Valve type	:	Floating design ball valve.
Body type	:	3 pc
Seat Type	:	Soft / Metal.
End connection	:	Screwed, socket & butt weld ends./Nipple Extn.
Size range	:	15NB to 50NB
Pressure rating	:	Class 800
seat leakage	:	Class VI - soft seat, Class V-Metal seat.
Operation	:	Hand lever/ Gear / Actuator (Electrical / Pneumatic).

CLASS 600 / 800 FLOATING DESIGN BALL VALVE



Dimensional Data In mm

Size	A	f _p		f _S	T
		RP	FB		
15	65	9.5	13	21.8	10
20	75	13	19	27.4	13
25	88	19	25	34.1	13
32	105	25	32	42.7	13
40	115	32	38	49	13
50	125	38	50	61	16

Standard material of construction:

1. Body	: A105, WCB, CFS, CF3M, F304, F316, CN7M.	6. Seat	: PTFE, GFT, CFT / Metal to Metal / Delrin, Nylon.
2. Pipe end	: A105, WCB, CFS, CF3M, F304, F316, CN7M.	7. Stem seal	: GFT
3. Gland	: ANSI410, 304, 316, 316L, MONEL, ALLOY20, HAST-B, C.	8. Gland Packing	: PTFE, Grafoil.
4. Ball	: ANSI410, 304, 316, 316L, MONEL, ALLOY20, HAST-B, C.	9. Body seal	: PTFE, Grafoil.
5. Stem	: ANSI410, 304, 316, 316L, MONEL, ALLOY20, HAST-B, C.	10. Gland nut	: Carbon steel.
		11. Body stud/nut	: B7/2H, BS/BSM.
		12. Belleville spring	: Spring steel
		13. Antistatic spring	: SS 304

Valves above 50 mm size can be offered in 2-Piece Design on request, solid ball on request.

All sizes of ball valves can also be provided with Gear, Actuator (Electrical/ Pneumatic).

For Cast Valves, Pressure rating will be class 600

For forged Valves, Pressure rating will be class 800