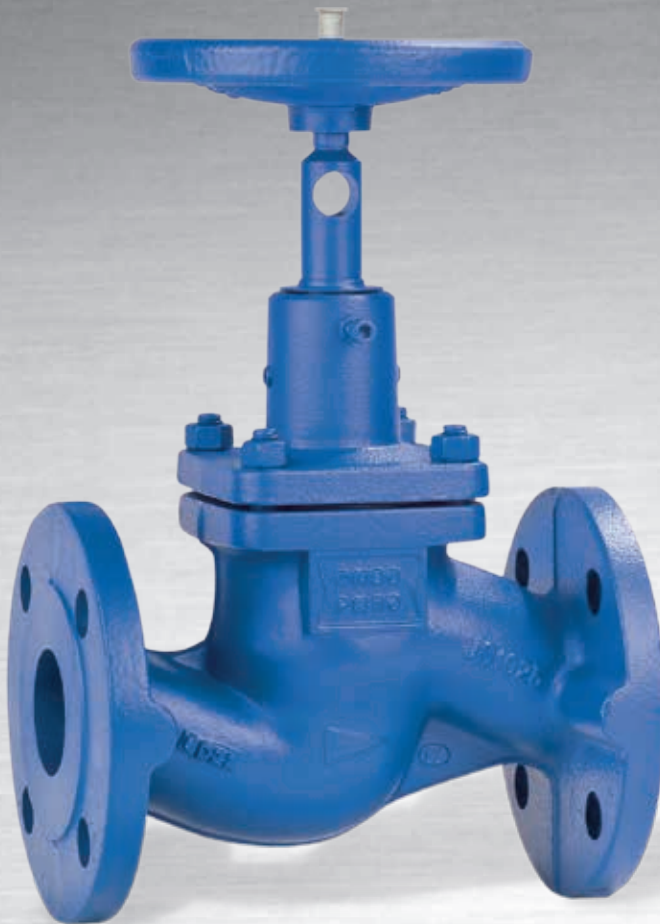


BOA[®]-H – Maintenance-free Bellows-type Globe Valves



BOA[®]-H EN-GJS-400-18-LT

Applications:

- Hot water heating systems
- High-temperature hot water heating systems
- Heat transfer systems
- Pressure vessel equipment
- Steam boiler systems
- Other fluids on request.

The limits given in the technical codes must be complied with. Please contact us for details.

More information:

www.ksb.com/products



BOA[®]-H EN-GJL-250

Your contact:

Authorised Dealer;
Pushkarna Sales Pvt Ltd.
4772, Hauz Qazi, Delhi-06.
Telefax : 011-23216378/23217239.
Email : sales@pushkarnasales.com
Web : www.pushkarnasales.com
KSB, FORBES MARSHALL, BRAY,
VAAS Valves & Automation.

BOA[®]-H – Maintenance-free Bellows-type Globe Valves

1 Improved energy efficiency of the system

The high-temperature version made of nodular cast iron, in particular, benefits from an easy-to-insulate bonnet design and a heat barrier toward the handwheel. As a result, heat losses are reduced by more than 50 % compared with yoke-type globe valves.

2 Greater reliability and longer service life of bellows

The bellows is fully confined when the valve is open and protected against surge pressures. The bellows is welded to the stem, so no vibrations are transmitted from the valve plug.

3 High user comfort at no extra charge

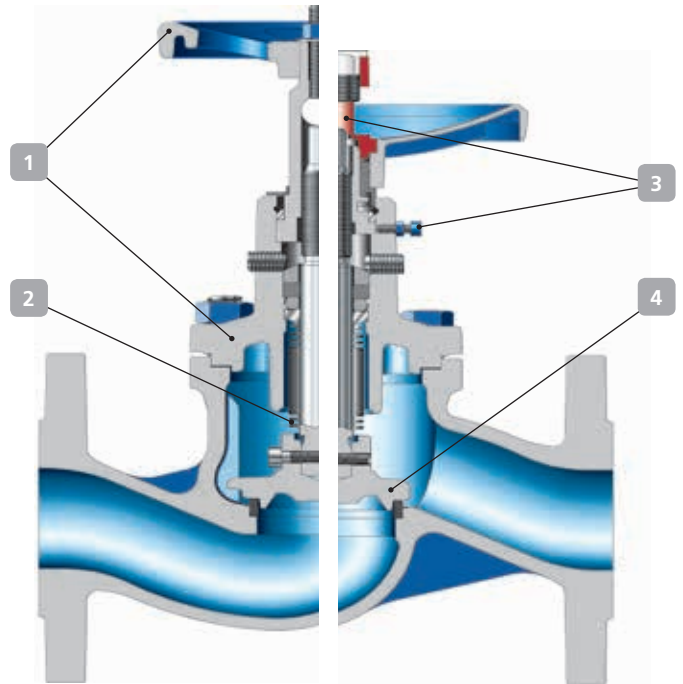
- Position indicator with travel stop and locking device are standard features on all valve sizes.
- Colour coding for identification of valve design during replacement work. The plug type and plug/seat interface material can be checked from outside without removing the insulation.

4 Optimum value for money: one valve offers two functions.

One valve model for shut-off and throttling thanks to throttling valve plug up to DN 100. Good throttling function with excellent flow coefficients.

Enhanced application range

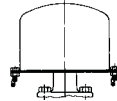
Its seat-guided V-port plug enables the valve to reliably handle maximum application requirements resulting from, e.g., vibration problems and high flow velocities.



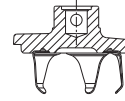
BOA[®]-H
EN-GJS-400-18-LT

BOA[®]-H
EN-GJL-250

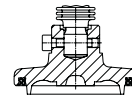
Variants



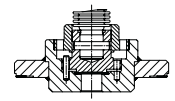
Lead-sealable cap
(assembly set)
(only EN-GJL-250)



V-port plug



Plug with
PTFE gasket,
DN 15 - 200



Pilot plug,
from DN 200

Additional type series

BOA[®]-H angle valve

BOA[®]-R non-return valve

Version with gland packing and electric actuator see BOA-H Mat E.

Pressure/temperature ratings

Nom. pressure	Material	Permissible operating pressures in bar at temperatures in °C ¹⁾				
		-10 to +120	+200	+250	+300	+350
PN16	EN-GJL-250	16	12.8	11.2	9.6	–
PN16	EN-GJS-400-18-LT	16	14.7	13.9	12.8	11.2
PN25	EN-GJS-400-18-LT	25	23	21.8	20	17.5

¹⁾ Intermediate temperatures can be derived by linear interpolation. The limits given in the technical codes must be complied with. Please contact us for details.

Other variants

V-port plug (seat-guided throttling plug for maximum requirements) for DN 15-300

High-temperature resistant paint (grey aluminium)

Oil and grease free version

Special flange designs

Version with either one or two limit switches (GJS only)



KSB Aktiengesellschaft
Johann-Klein-Straße 9
67227 Frankenthal (Germany)
www.ksb.com