

## Forbes Marshall Air Eliminator

### Description

The Forbes Marshall Air Eliminator, FMAE31, is a float type air vent for liquid systems. The body and cover are of cast iron and the complete unit is easily maintainable.

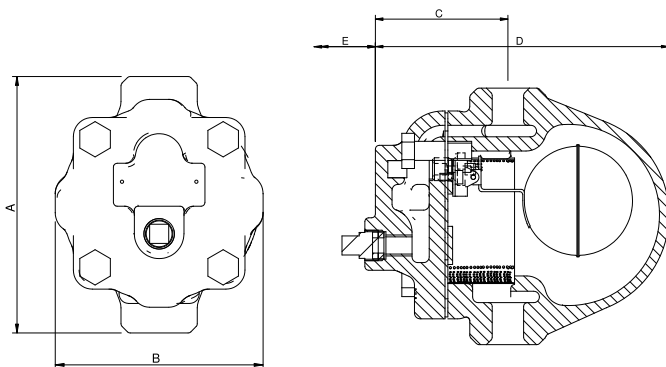
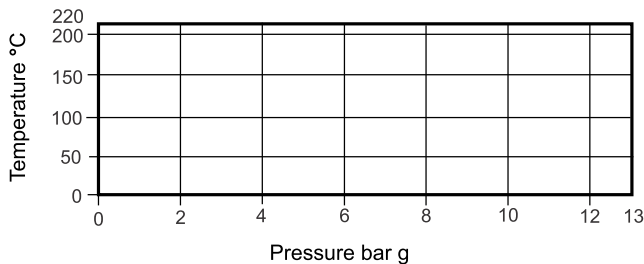
### Sizes and End Connections

DN 15,20 and 25 Screwed BSPT / NPT

### Limiting Conditions

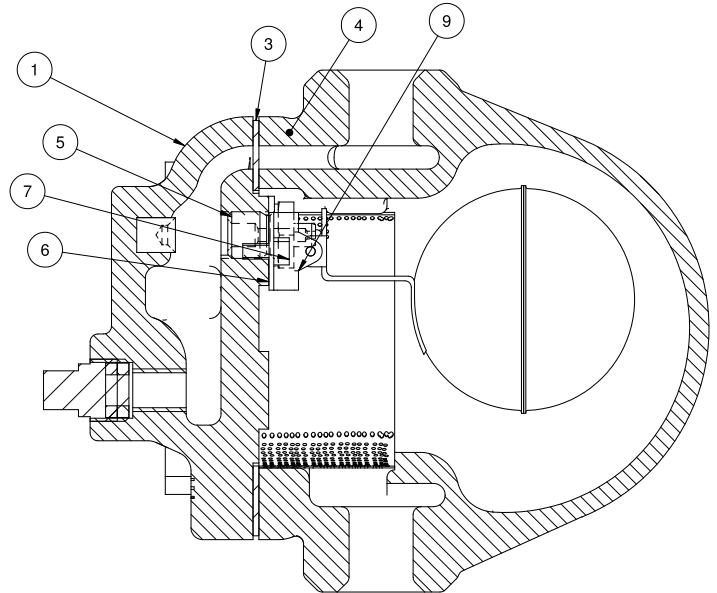
PMA-Max. allowable pressure	13.0 bar g
TMA-Max. allowable temperature	220°C
TMO-Max.operating temperature	220°C
Cold hydraulic test pressure	26.0 bar g
Δ PMX- Max. differential pressure	13 bar g

### Operating range



### Dimensions (approx.) in mm

Size	A	B	C	D	E	Weight
DN 15/20	130	109	72	152	120	4 Kg
DN 25	141	109	72	160	135	4 kg

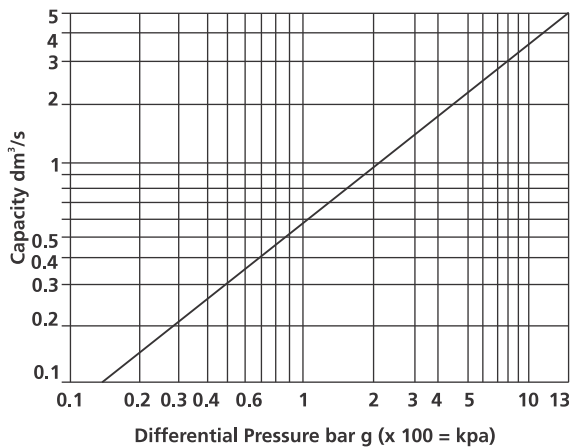


### Material

No	Part	Material	Standard
1	Base	Cast Iron	IS 210 FG 260
2	Cover Bolts	Carbon Steel	H T IS 1367 Gr.8
3	Cover Gaskets	SS Reinforced Exfoliated Graphite	
4	Cover	Cast Iron	IS 210 FG 260
5	Valve Seat	Stainless Steel	ASTM A743 Gr. CA 40
6	Valve Seat Gasket	Stainless Steel Type 420	ASTM A240
7	Set Screws	Stainless Steel Type 304	IS 1364
8	Ball Float and Lever	Stainless Steel Type 304	ASTM A240
9	Pivot Frame	Stainless Steel Type 304	ASTM A240

**Authorised Dealer;**  
**Pushkarna Sales Pvt Ltd.**  
 4772, Hauz Qazi, Delhi-06.  
 Telefax : 011-23216378/23217239.  
 Email : sales@pushkarnasales.com  
 Web : www.pushkarnasales.com  
**KSB, FORBES MARSHALL, BRAY,**  
**VAAS Valves & Automation.**

## Capacity Chart



## How to Order

Example : DN 20 Forbes Marshall Air Eliminator  
FMAE31 Screwed BSPT.

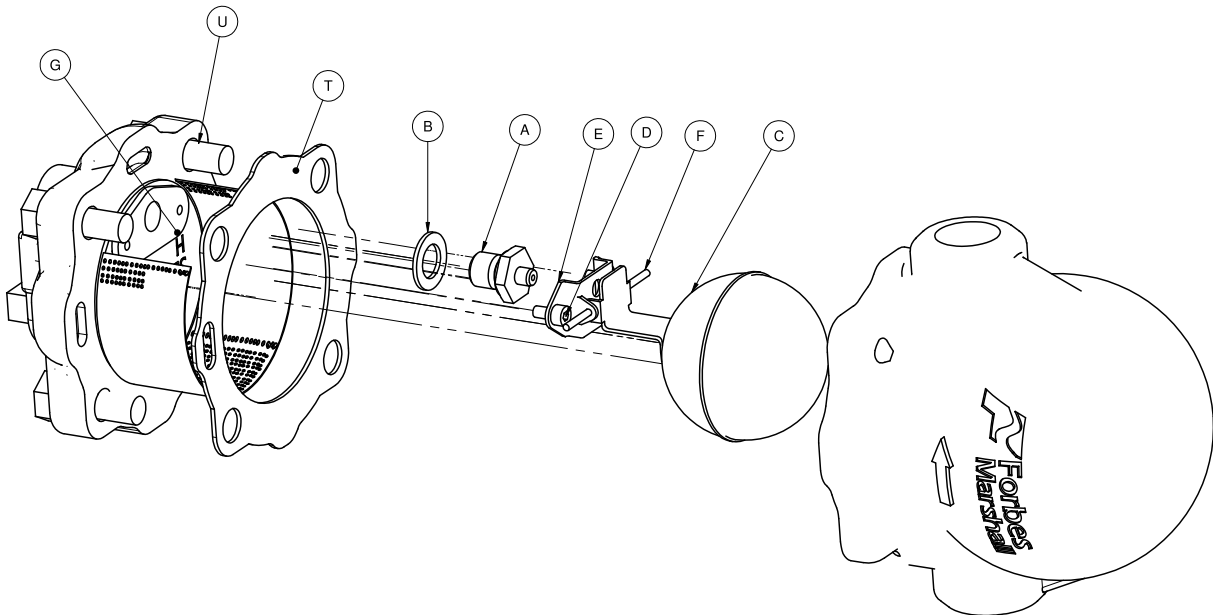
## Installation

The FMAE31 must be fitted in a vertical plane above the point being vented with the direction of flow as indicated on cover so that the float arm falls and rises vertically. The arrow on the nameplate should point downwards. As with all automatic air vents, dribbling may occur if the valve is fouled with dirt. It is therefore recommended that a drip pipe is fitted to the outlet discharging to a safe place. Refer user manual for further details.

## Maintenance

This can be carried out easily with the FMAE31 automatic air vent by closing the isolating ball valve.

When reassembling make sure that all joint faces are clean and always use a new cover gasket. Open isolating valve.



## How to Fit Main Valve Assembly

Undo cover bolts and lift off base. Remove complete float assembly by undoing the two screws.

Remove main valve seat and replace with a new one supplied with new gasket.

Fit complete new float assembly by tightening the assembly set screw. Refit cover using new gasket.

## Recommended Tightening Torques

Part	Torque (Nm)
Cover Bolts	25-35
Valve Seat	25-35
Set Screw	2.5-3

## Available spares (refer fig. below)

Main valve assembly	A, B, C, D, E, F, G, T
Set of gaskets (Packet of 3)	B, T
Float assembly	C

## How to Order Spares

Always order spares by using the description given in the column headed "Available Spares" in user manual