

## Forbes Marshall Thermodynamic Trap

Authorised Dealer;  
Pushkarna Sales Pvt Ltd.  
4772, Hauz Qazi, Delhi-06.  
Telefax : 011-23216378/23217239.  
Email : sales@pushkarnasales.com  
Web : www.pushkarnasales.com  
KSB, FORBES MARSHALL, BRAY,  
VAAS Valves & Automation.

### Description

The Forbes Marshall Thermodynamic Trap, FMTD722-M, is a maintainable high pressure thermodynamic steam trap with an integral strainer and a replaceable seat for ease of maintenance. It has low capacity and is specifically designed for superheated applications up to 250 bar g.

### Sizes and Pipeline Connections

DN 15 and DN 20 butt weld ends to suit schedule 160 pipe.

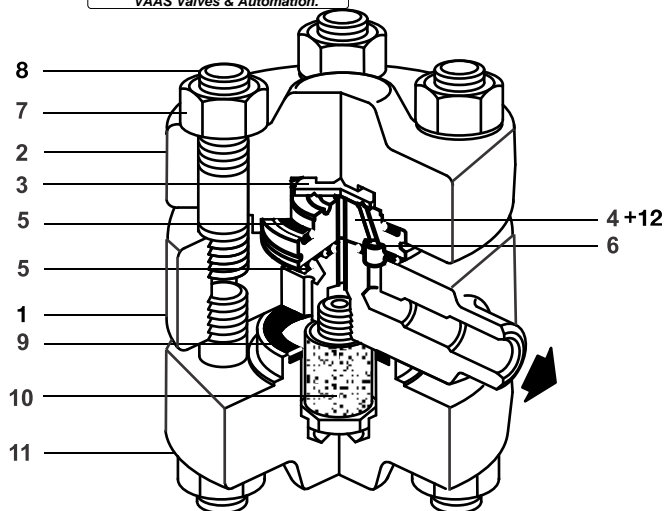
DN 15 and DN 20 socket weld ends to ASME (ANSI), B 16.11 Class 6000.

**Note :** Available with ANSI 600 and ANSI 1500 flanges on request.

### Limiting Conditions

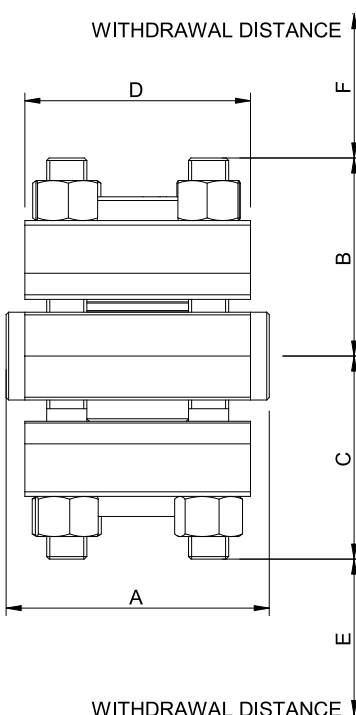
**Note :** if the product is used at pressure above 170 bar kg/cm<sup>2</sup> we recommend regular inspection of the seat.

Body design conditions	PN 250
PMA Maximum allowable pressure	250kg/cm <sup>2</sup> @ 300°C
TMA Maximum allowable temperature	500°C @ 80 kg/cm <sup>2</sup>
Minimum allowable temperature	-29°C
PMO Maximum operating pressure	220 kg/cm <sup>2</sup> @ 374°C
TMO Maximum operating temperature	550°C @ 80 kg/cm <sup>2</sup>
Minimum operating temperature	0°C
PMOB Maximum operating back pressure should not exceed of 50% the upstream pressure	
Minimum operating differential pressure	8 kg/cm <sup>2</sup>
Designed for a maximum cold hydraulic test pressure of	375 kg/cm <sup>2</sup>



### Material

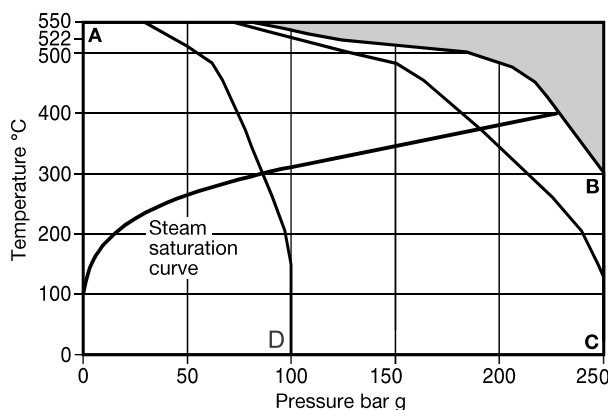
No.	Part	Material	Standard
1	Body	Alloy Steel	ASTM A182F 22
2	Top Cover	Alloy Steel	ASTM A182 F 22
3	Disc	Steel	AISI D2
4	Seat	Steel	AISI D2
5	Top Cover Gasket	Spirally wound SS with exfoliated graphite filler	
6	Inner seat Gasket	SS with exfoliated graphite filler	
7	Cover Nuts	Steel	ASTM A194 Gr. 4
8	Cover Studs	Steel	ASTM A193 Gr. B.16
9	Bottom Cover Gasket	SS with exfoliated graphite filler	
10	Strainer Screen Assembly	Stainless Steel	BS 970 304 515/ sintered stainless
11	Bottom Cover	Alloy Steel	ASTM A182 F22
12	Ferrule	Stainless Steel	



### Dimensions/weights (approx.) in mm and kg

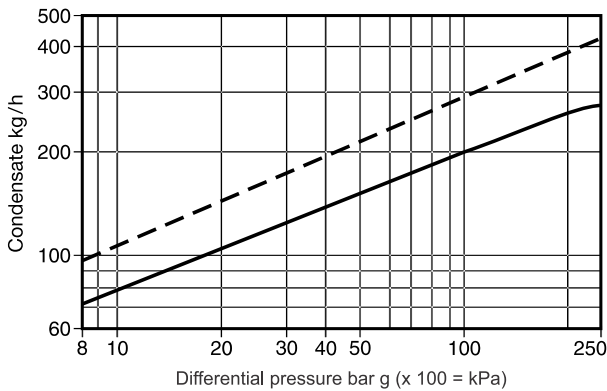
Size	DN 15	DN 20
A	105	105
B	80	80
C	80	80
D	90	90
E	55	55
F	55	55
Weight	8	8

### Operating Range



The product **must not** be used in this region.  
**A - B** Socket weld and Butt weld ends  
**A - C** Flanged to ASME (ANSI) Class 1500  
**A - D** Flanged to ASME (ANSI) Class 600

## Capacity Chart (in accordance with ISO 7842)



Hot water capacity ——— Cold water capacity - - - - -

### How to Order

Example : 1 No. Forbes Marshall Thermodynamic Trap, FMTD722-M, with maintainable seat, butt weld ends to suit schedule 160 pipe.

### Safety Information, Installation and Maintenance

For full details see the installation and maintenance instruction supplied with the product.

### Installation Note

The FMTD722-M is designed for installation with the nameplate on top, in a horizontal pipeline. For ease of maintenance, consideration should be given to fitting isolation valves upstream and downstream of the steam trap.

After 24 hours in service the cover nuts should be checked for tightness.

### Spare Parts

The spares available are shown in solid outline. Parts drawn in broken line are not supplied as spares.

### Available spares

Set of cover studs and nuts	8 and 7 (pack of 8)
Strainer screen and gasket	10, 9
Set of gaskets	5 (2 nos), 6, 9 (Pack of 3)
Set of internals	3, 5 (2 Nos.), 6, 9, 10, 4+12

### Recommended tightening torques

Item	Part	Or  mm	Nm
10	Spool	22 A/F	25-35
8	Stud	M 16	85-90
7	Nut	23 A/F M16	160-180

