

Forbes Marshall Moisture Separator - Fabricated

Authorised Dealer;
Pushkarna Sales Pvt Ltd.
4772, Hauz Qazi, Delhi-06.
Telefax : 011-23216378/23217239.
Email : sales@pushkarnasales.com
Web : www.pushkarnasales.com
KSB, FORBES MARSHALL, BRAY,
VAAS Valves & Automation.

Description

The Forbes Marshall Moisture Separator - Fabricated, FMSEFPB is a fabricated type separator used for the removal of entrained liquids in steam, so that they can be drained away as condensate.

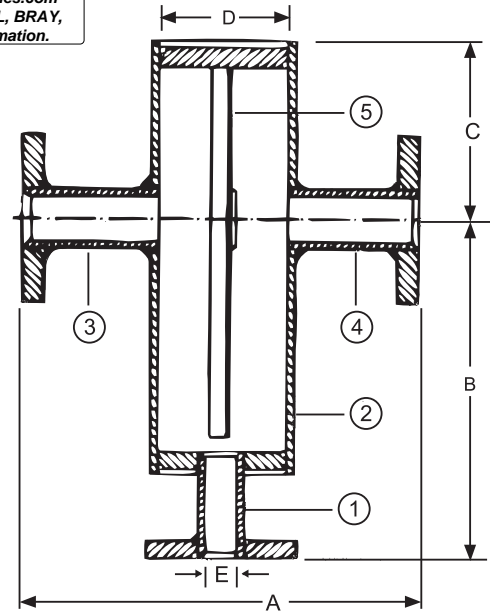
Sizes

DN 15, 20, 25, 40, 50, 65, 80, 100, 125, 150, 200, 250 and 300

Note: Available with IBR test certificates, on request.

Limiting Conditions

Flange types	Max. Working pressure	Max. Working temp.
TAB 'H'	34 bar g at 232 °C	425 °C at 17 bar g
TAB 'J'	48 bar g at 232 °C	425 °C at 24 bar g
TAB 'K'	62 bar g at 232 °C	425 °C at 31 bar g
ASA 150	19.6 bar g at 38 °C	425 °C at 5.5 bar g
ASA 300	42 bar g at 250 °C	425 °C at 28.8 bar g
ASA 600	77 bar g at 325 °C	425 °C at 57.5 bar g
PN 16	16 bar g at 200 °C	425 °C at 9.1 bar g
PN 25	25 bar g at 200 °C	425 °C at 14.25 bar g
PN 40	40 bar g at 200 °C	425 °C at 22.8 bar g

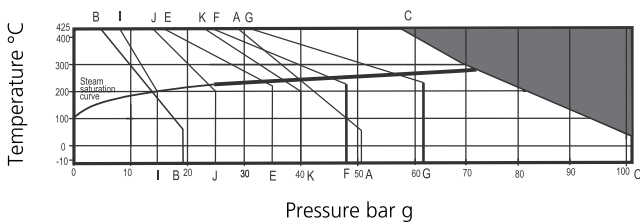


Materials

Sr. No.	Part	Material
1	Drain	ASTM A106 Gr B
2	Body	ASTM A106 Gr B
3	Inlet	ASTM A106 Gr B
4	Outlet	ASTM A106 Gr B
5	Baffle Plate	IS 2002

Operating range

Pressure / temperature limits



- This product must not be used in this region.
- A-A Flanged ANSI 300 G-G BS10 Table K
- B-B Flanged ANSI 150 H-H PN16
- C-C Flanged ANSI 600 J-J PN25
- E-E BS10 Table H K-K PN40
- F-F BS10 Table J

Installation

Install in a horizontal pipeline with the drain directly below.

Note: To ensure that any separated liquid is drained away quickly, a suitable steam trap must be connected to the drain connection. Consult Forbes Marshall for further details.

Dimensions (approx.) in mm

Sizes (DN)	A	B	C	D	E Nominal
15	216	203	100	80	15
20	241	203	143	80	15
25	368	295	149	100	25
40	318	276	149	100	25
50	470	355	222	150	25
65	470	387	225	150	25
80	470	477	238	150	25
100	575	515	279	200	25
125	673	619	346	250	25
150	749	775	394	300	25
200	870	841	517	400	25
250	900	912	610	400	25
300	929	960	660	450	25

General tolerance ± 2%

How to Order

Example: 1 No. DN100 Forbes Marshall Moisture Separator - Fabricated FMSEFPB, Flanged BS10 table K.

