

## Forbes Marshall Pressure Reducing Stations With Ecotrol Series Control Valve – Electro Pneumatic / Roboter Based

### Description

Forbes Marshall's Electro pneumatic and Roboter operated Ecotrol series control valve based Pressure Reducing Stations are specially designed and fabricated as a complete packaged product with all necessary steam ancillaries to maintain the desired pressures and flow rates of the steam making the system more reliable, safe and easy to operate. A bypass loop is provided to enable online maintenance of the control valve ensuring no downtime.

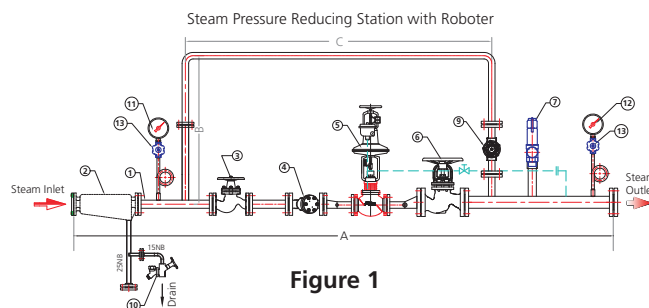
### Limiting Conditions

	Class 300	Class 150
PMO	17.5 bar (g)	13 bar (g)
TMO	209 deg C	195 deg C

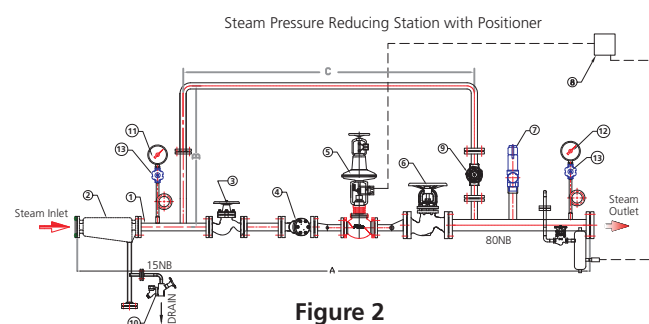
**Note:** For higher pressures and class ratings contact nearest Forbes Marshall branch office or Head office.

**Table A) Material description for FMPRS with Roboter. Refer Fig.1**

Part No.	Description	Material
1	Interconnecting Pipework for FMPRS	Carbon Steel
2	Moisture Separator	C.I / C.S
3	Piston Valve - Inlet Isolation	Cast Steel
4	Strainer	Cast Iron / Cast Steel
5	Control Valve Ecotrol Series with Roboter	C.S
6	Piston Valve - Outlet Isolation	Cast Steel
7	Safety Valve	SG Iron / Cast Steel
8	Piston Valve for Balancing Line	F.C.S
9	Piston Valve - Bypass	Cast Steel
10	FMPRS drain assembly	F.C.S
11	Dial Pressure Gauge - Inlet	S.S
12	Dial Pressure Gauge - Outlet	S.S
13	Stop valve for Pr. Gauge - Piston valve	F.C.S



**Figure 1**



**Figure 2**

**Table.B) Material description for FMPRS with Roboter. Refer Fig.2**

Part No.	Description	Material
1	Interconnecting Pipework for PRS	Carbon Steel
2	Moisture Separator	C.I / C.S
3	Piston Valve - Inlet Isolation	Cast Steel
4	Strainer	Cast Iron / Cast Steel
5	Control Valve Ecotrol Series with Electro pneumatic positioner	C.S
6	Piston Valve - Outlet Isolation	Cast Steel
7	Safety Valve	SG Iron / Cast Steel
8	PID Controller	---
9	Piston Valve - Bypass	Cast Steel
10	FMPRS drain assembly	F.C.S
11	Dial Pressure Gauge - Inlet	S.S
12	Dial Pressure Gauge - Outlet	S.S
13	Stop valve for Pr. Gauge - Piston valve	F.C.S
14	Pressure Transmitter	---
15	Condensing Pot	C.S

Authorised Dealer;  
Pushkarna Sales Pvt Ltd.  
4772, Hauz Qazi, Delhi-06.  
Telefax : 011-23216378/23217239.  
Email : sales@pushkarnasales.com  
Web : www.pushkarnasales.com  
KSB, FORBES MARSHALL, BRAY,  
VAAS Valves & Automation.

**Available Sizes, End Connections and Dimensional details**

**Class 150**

<b>SR NO</b>	<b>FMPRS SIZE</b>	<b>FMPRS FG CODE</b>	<b>CERTIFICATION</b>	<b>TOTAL LENGTH (MM) (A)</b>	<b>TOTAL HEIGHT (MM) (B)</b>	<b>BYPASS LENGTH (MM) (C)</b>	<b>PRV SIZE</b>
1	20X25	C3A-FMPRS-STD20X15APX25Q11	IBR	2779	1100	1501	15NB
2	20X25	C3A-FMPRS-STD20X15ARX25Q11	IBR	2779	1100	1501	15NB
3	25X40	C3A-FMPRS-STD25X25APX40Q11	IBR	3269	1100	1862	25NB
4	25X40	C3A-FMPRS-STD25X25APX40Q12	IBR	3269	1100	1862	25NB
5	25X40	C3A-FMPRS-STD25X25ARX40Q11	IBR	3269	1100	1862	25NB
6	25X40	C3A-FMPRS-STD25X25ARX40Q12	IBR	3269	1100	1862	25NB
7	25X50	C3A-FMPRS-STD25X25APX50Q11	IBR	3344	1100	1862	25NB
8	25X50	C3A-FMPRS-STD25X25APX50Q12	IBR	3344	1100	1862	25NB
9	25X50	C3A-FMPRS-STD25X25ARX50Q11	IBR	3344	1100	1862	25NB
10	25X50	C3A-FMPRS-STD25X25ARX50Q12	IBR	3344	1100	1862	25NB
11	40X50	C3A-FMPRS-STD40X25APX50Q11	IBR	3761	1100	1862	25NB
12	40X50	C3A-FMPRS-STD40X25APX50Q12	IBR	3761	1100	1862	25NB
13	40X50	C3A-FMPRS-STD40X25ARX50Q11	IBR	3761	1100	1862	25NB
14	40X50	C3A-FMPRS-STD40X25ARX50Q12	IBR	3761	1100	1862	25NB
15	40X50	C3A-FMPRS-STD40X40APX50Q11	IBR	3761	1100	2041	40NB
16	40X50	C3A-FMPRS-STD40X40APX50Q12	IBR	3761	1100	2041	40NB
17	40X50	C3A-FMPRS-STD40X40ARX50Q11	IBR	3761	1100	2041	40NB
18	40X50	C3A-FMPRS-STD40X40ARX50Q12	IBR	3761	1100	2041	40NB
19	40X65	C3A-FMPRS-STD40X25APX65Q11	IBR	3811	1100	1862	25NB
20	40X65	C3A-FMPRS-STD40X25APX65Q12	IBR	3811	1100	1862	25NB
21	40X65	C3A-FMPRS-STD40X25ARX65Q11	IBR	3811	1100	1862	25NB
22	40X65	C3A-FMPRS-STD40X25ARX65Q12	IBR	3811	1100	1862	25NB
23	40X65	C3A-FMPRS-STD40X40APX65Q11	IBR	3811	1100	2041	40NB
24	40X65	C3A-FMPRS-STD40X40APX65Q12	IBR	3811	1100	2041	40NB
25	40X65	C3A-FMPRS-STD40X40ARX65Q11	IBR	3811	1100	2041	40NB
26	40X65	C3A-FMPRS-STD40X40ARX65Q12	IBR	3811	1100	2041	40NB
27	40X80	C3A-FMPRS-STD40X25APX80Q11	IBR	3811	1100	1862	25NB
28	40X80	C3A-FMPRS-STD40X25APX80Q12	IBR	3811	1100	1862	25NB
29	40X80	C3A-FMPRS-STD40X25ARX80Q11	IBR	3811	1100	1862	25NB
30	40X80	C3A-FMPRS-STD40X25ARX80Q12	IBR	3811	1100	1862	25NB
31	40X80	C3A-FMPRS-STD40X40APX80Q11	IBR	3811	1100	2041	40NB
32	40X80	C3A-FMPRS-STD40X40APX80Q12	IBR	3811	1100	2041	40NB
33	40X80	C3A-FMPRS-STD40X40ARX80Q11	IBR	3811	1100	2041	40NB
34	40X80	C3A-FMPRS-STD40X40ARX80Q12	IBR	3811	1100	2041	40NB
35	50X65	C3A-FMPRS-STD50X40APX65Q11	IBR	4210	1100	2041	40NB
36	50X65	C3A-FMPRS-STD50X40ARX65Q11	IBR	4210	1100	2041	40NB
37	50X65	C3A-FMPRS-STD50X50APX65Q11	IBR	4210	1100	2350	50NB
38	50X65	C3A-FMPRS-STD50X50ARX65Q11	IBR	4210	1100	2350	50NB
39	50X80	C3A-FMPRS-STD50X40APX80Q11	IBR	4160	1100	2041	40NB
40	50X80	C3A-FMPRS-STD50X40ARX80Q11	IBR	4160	1100	2041	40NB
41	50X80	C3A-FMPRS-STD50X50APX80Q11	IBR	4160	1100	2350	50NB
42	50X80	C3A-FMPRS-STD50X50ARX80Q11	IBR	4160	1100	2350	50NB
43	50X100	C3A-FMPRS-STD50X40APX100Q11	IBR	4260	1100	2041	40NB
44	50X100	C3A-FMPRS-STD50X40ARX100Q11	IBR	4260	1100	2041	40NB
45	50X100	C3A-FMPRS-STD50X50APX100Q11	IBR	4260	1100	2350	50NB
46	50X100	C3A-FMPRS-STD50X50ARX100Q11	IBR	4260	1100	2350	50NB
47	65X80	C3A-FMPRS-STD65X50APX80Q11	IBR	4158	1100	2350	50NB
48	65X80	C3A-FMPRS-STD65X50APX80Q12	IBR	4158	1100	2350	50NB
49	65X80	C3A-FMPRS-STD65X50APX80Q13	IBR	4158	1100	2350	50NB

SR NO	FMPRS SIZE	FMPRS FG CODE	CERTIFICATION	TOTAL LENGTH (MM) (A)	TOTAL HEIGHT (MM) (B)	BYPASS LENGTH (MM) (C)	PRV SIZE
50	65X80	C3A-FMPRS-STD65X50ARX80Q11	IBR	4158	1100	2350	50NB
51	65X80	C3A-FMPRS-STD65X50ARX80Q12	IBR	4158	1100	2350	50NB
52	65X80	C3A-FMPRS-STD65X50ARX80Q13	IBR	4158	1100	2350	50NB
53	65X100	C3A-FMPRS-STD65X50APX100Q11	IBR	4058	1100	2350	50NB
54	65X100	C3A-FMPRS-STD65X50APX100Q12	IBR	4058	1100	2350	50NB
55	65X100	C3A-FMPRS-STD65X50APX100Q13	IBR	4058	1100	2350	50NB
56	65X100	C3A-FMPRS-STD65X50ARX100Q11	IBR	4058	1100	2350	50NB
57	65X100	C3A-FMPRS-STD65X50ARX100Q12	IBR	4058	1100	2350	50NB
58	65X100	C3A-FMPRS-STD65X50ARX100Q13	IBR	4058	1100	2350	50NB
59	65X125	C3A-FMPRS-STD65X50APX125QI-3.3	IBR	4158	1100	2350	50NB
60	65X125	C3A-FMPRS-STD65X50APX125QI-3.85	IBR	4158	1100	2350	50NB
61	65X125	C3A-FMPRS-STD65X50APX125QI-4.4	IBR	4158	1100	2350	50NB
62	65X125	C3A-FMPRS-STD65X50APX125QI-4.95	IBR	4158	1100	2350	50NB
63	65X125	C3A-FMPRS-STD65X50APX125QI-5.5	IBR	4158	1100	2350	50NB
64	65X125	C3A-FMPRS-STD65X50APX125QI-6.6	IBR	4158	1100	2350	50NB
65	65X125	C3A-FMPRS-STD65X50ARX125QI-3.3	IBR	4158	1100	2350	50NB
66	65X125	C3A-FMPRS-STD65X50ARX125QI-3.85	IBR	4158	1100	2350	50NB
67	65X125	C3A-FMPRS-STD65X50ARX125QI-4.4	IBR	4158	1100	2350	50NB
68	65X125	C3A-FMPRS-STD65X50ARX125QI-4.95	IBR	4158	1100	2350	50NB
69	65X125	C3A-FMPRS-STD65X50ARX125QI-5.5	IBR	4158	1100	2350	50NB
70	65X125	C3A-FMPRS-STD65X50ARX125QI-6.6	IBR	4158	1100	2350	50NB
71	80X100	C3A-FMPRS-STD80X50APX100Q11	IBR	4737	1100	2350	50NB
72	80X100	C3A-FMPRS-STD80X50APX100Q12	IBR	4737	1100	2350	50NB
73	80X100	C3A-FMPRS-STD80X80APX100Q13	IBR	4737	1100	2751	80NB
74	80X100	C3A-FMPRS-STD80X80APX100Q14	IBR	4737	1100	2751	80NB
75	80X100	C3A-FMPRS-STD80X80APX100Q15	IBR	4737	1100	2751	80NB
76	80X100	C3A-FMPRS-STD80X80APX100QI-3.3	IBR	4737	1100	2751	80NB
77	80X100	C3A-FMPRS-STD80X80APX100QI-3.85	IBR	4737	1100	2751	80NB
78	80X100	C3A-FMPRS-STD80X80APX100QI-4.4	IBR	4737	1100	2751	80NB
79	80X100	C3A-FMPRS-STD80X80APX100QI-5.5	IBR	4737	1100	2751	80NB
80	80X100	C3A-FMPRS-STD80X50ARX100Q11	IBR	4737	1100	2751	80NB
81	80X100	C3A-FMPRS-STD80X50ARX100Q12	IBR	4737	1100	2751	80NB
82	80X100	C3A-FMPRS-STD80X80ARX100Q13	IBR	4737	1100	2751	80NB
83	80X100	C3A-FMPRS-STD80X80ARX100Q14	IBR	4737	1100	2751	80NB
84	80X100	C3A-FMPRS-STD80X80ARX100Q15	IBR	4737	1100	2751	80NB
85	80X100	C3A-FMPRS-STD80X80ARX100QI-3.3	IBR	4737	1100	2751	80NB
86	80X100	C3A-FMPRS-STD80X80ARX100QI-3.85	IBR	4737	1100	2751	80NB
87	80X100	C3A-FMPRS-STD80X80ARX100QI-4.4	IBR	4737	1100	2751	80NB
88	80X100	C3A-FMPRS-STD80X80ARX100QI-5.5	IBR	4737	1100	2751	80NB
89	80X125	C3A-FMPRS-STD80X80APX125QI-3.3	IBR	4837	1100	2751	80NB
90	80X125	C3A-FMPRS-STD80X80APX125QI-3.85	IBR	4837	1100	2751	80NB
91	80X125	C3A-FMPRS-STD80X80APX125QI-4.4	IBR	4837	1100	2751	80NB
92	80X125	C3A-FMPRS-STD80X80APX125QI-4.95	IBR	4837	1100	2751	80NB
93	80X125	C3A-FMPRS-STD80X80APX125QI-5.5	IBR	4837	1100	2751	80NB
94	80X125	C3A-FMPRS-STD80X80APX125QI-6.6	IBR	4837	1100	2751	80NB
95	80X125	C3A-FMPRS-STD80X80ARX125QI-3.3	IBR	4837	1100	2751	80NB
96	80X125	C3A-FMPRS-STD80X80ARX125QI-3.85	IBR	4837	1100	2751	80NB
97	80X125	C3A-FMPRS-STD80X80ARX125QI-4.4	IBR	4837	1100	2751	80NB
98	80X125	C3A-FMPRS-STD80X80ARX125QI-4.95	IBR	4837	1100	2751	80NB

SR NO	FMPRS SIZE	FMPRS FG CODE	CERTIFICATION	TOTAL LENGTH (MM) (A)	TOTAL HEIGHT (MM) (B)	BYPASS LENGTH (MM) (C)	PRV SIZE
99	80X125	C3A-FMPRS-STD80X80ARX125QI-5.5	IBR	4837	1100	2751	80NB
100	80X125	C3A-FMPRS-STD80X80ARX125QI-6.6	IBR	4837	1100	2751	80NB
101	80X150	C3A-FMPRS-STD80X80APX150QI-3.3	IBR	4837	1100	2751	80NB
102	80X150	C3A-FMPRS-STD80X80APX150QI-3.85	IBR	4837	1100	2751	80NB
103	80X150	C3A-FMPRS-STD80X80APX150QI-4.4	IBR	4837	1100	2751	80NB
104	80X150	C3A-FMPRS-STD80X80APX150QI-4.95	IBR	4837	1100	2751	80NB
105	80X150	C3A-FMPRS-STD80X80APX150QI-5.5	IBR	4837	1100	2751	80NB
106	80X150	C3A-FMPRS-STD80X80APX150QI-6.6	IBR	4837	1100	2751	80NB
107	80X150	C3A-FMPRS-STD80X80ARX150QI-3.3	IBR	4837	1100	2751	80NB
108	80X150	C3A-FMPRS-STD80X80ARX150QI-3.85	IBR	4837	1100	2751	80NB
109	80X150	C3A-FMPRS-STD80X80ARX150QI-4.4	IBR	4837	1100	2751	80NB
110	80X150	C3A-FMPRS-STD80X80ARX150QI-4.95	IBR	4837	1100	2751	80NB
111	80X150	C3A-FMPRS-STD80X80ARX150QI-5.5	IBR	4837	1100	2751	80NB
112	80X150	C3A-FMPRS-STD80X80ARX150QI-6.6	IBR	4837	1100	2751	80NB
113	100X125	C3A-FMPRS-STD100X80APX125QI-3.3	IBR	5047	1100	2751	80NB
114	100X125	C3A-FMPRS-STD100X80APX125QI-3.85	IBR	5047	1100	2751	80NB
115	100X125	C3A-FMPRS-STD100X80APX125QI-4.4	IBR	5047	1100	2751	80NB
116	100X125	C3A-FMPRS-STD100X80APX125QI-4.95	IBR	5047	1100	2751	80NB
117	100X125	C3A-FMPRS-STD100X80APX125QI-5.5	IBR	5047	1100	2751	80NB
118	100X125	C3A-FMPRS-STD100X80APX125QI-6.6	IBR	5047	1100	2751	80NB
119	100X125	C3A-FMPRS-STD100X80ARX125QI-3.3	IBR	5047	1100	2751	80NB
120	100X125	C3A-FMPRS-STD100X80ARX125QI-3.85	IBR	5047	1100	2751	80NB
121	100X125	C3A-FMPRS-STD100X80ARX125QI-4.4	IBR	5047	1100	2751	80NB
122	100X125	C3A-FMPRS-STD100X80ARX125QI-4.95	IBR	5047	1100	2751	80NB
123	100X125	C3A-FMPRS-STD100X80ARX125QI-5.5	IBR	5047	1100	2751	80NB
124	100X125	C3A-FMPRS-STD100X80ARX125QI-6.6	IBR	5047	1100	2751	80NB
125	100X150	C3A-FMPRS-STD100X80APX150QI-3.3	IBR	5096	1100	2751	80NB
126	100X150	C3A-FMPRS-STD100X80APX150QI-3.85	IBR	5096	1100	2751	80NB
127	100X150	C3A-FMPRS-STD100X80APX150QI-4.4	IBR	5096	1100	2751	80NB
128	100X150	C3A-FMPRS-STD100X80APX150QI-4.95	IBR	5096	1100	2751	80NB
129	100X150	C3A-FMPRS-STD100X80APX150QI-5.5	IBR	5096	1100	2751	80NB
130	100X150	C3A-FMPRS-STD100X80APX150QI-6.6	IBR	5096	1100	2751	80NB
131	100X150	C3A-FMPRS-STD100X80ARX150QI-3.3	IBR	5096	1100	2751	80NB
132	100X150	C3A-FMPRS-STD100X80ARX150QI-3.85	IBR	5096	1100	2751	80NB
133	100X150	C3A-FMPRS-STD100X80ARX150QI-4.4	IBR	5096	1100	2751	80NB
134	100X150	C3A-FMPRS-STD100X80ARX150QI-4.95	IBR	5096	1100	2751	80NB
135	100X150	C3A-FMPRS-STD100X80ARX150QI-5.5	IBR	5096	1100	2751	80NB
136	100X150	C3A-FMPRS-STD100X80ARX150QI-6.6	IBR	5096	1100	2751	80NB
137	100X200	C3A-FMPRS-STD100X100APX200QI-3.3	IBR	5917	1550	3371	100NB
138	100X200	C3A-FMPRS-STD100X100APX200QI3.85	IBR	5917	1550	3371	100NB
139	100X200	C3A-FMPRS-STD100X100APX200QI-4.4	IBR	5917	1550	3371	100NB
140	100X200	C3A-FMPRS-STD100X100APX200QI4.95	IBR	5917	1550	3371	100NB
141	100X200	C3A-FMPRS-STD100X100APX200QI-5.5	IBR	5917	1550	3371	100NB
142	100X200	C3A-FMPRS-STD100X100APX200QI-6.6	IBR	5917	1550	3371	100NB
143	100X200	C3A-FMPRS-STD100X100ARX200QI-3.3	IBR	5917	1550	3371	100NB
144	100X200	C3A-FMPRS-STD100X100ARX200QI3.85	IBR	5917	1550	3371	100NB
145	100X200	C3A-FMPRS-STD100X100ARX200QI-4.4	IBR	5917	1550	3371	100NB
146	100X200	C3A-FMPRS-STD100X100ARX200QI4.95	IBR	5917	1550	3371	100NB
147	100X200	C3A-FMPRS-STD100X100ARX200QI-5.5	IBR	5917	1550	3371	100NB

SR NO	FMPRS SIZE	FMPRS FG CODE	CERTIFICATION	TOTAL LENGTH (MM) (A)	TOTAL HEIGHT (MM) (B)	BYPASS LENGTH (MM) (C)	PRV SIZE
148	100X200	C3A-FMPRS-STD100X100ARX200QI-6.6	IBR	5917	1550	3371	100NB
149	125X150	C3A-FMPRS-STD125X100APX150QI-3.3	IBR	5781	1550	3371	100NB
150	125X150	C3A-FMPRS-STD125X100APX150QI3.85	IBR	5781	1550	3371	100NB
151	125X150	C3A-FMPRS-STD125X100APX150QI-4.4	IBR	5781	1550	3371	100NB
152	125X150	C3A-FMPRS-STD125X100APX150QI4.95	IBR	5781	1550	3371	100NB
153	125X150	C3A-FMPRS-STD125X100APX150QI-5.5	IBR	5781	1550	3371	100NB
154	125X150	C3A-FMPRS-STD125X100APX150QI-6.6	IBR	5781	1550	3371	100NB
155	125X150	C3A-FMPRS-STD125X100ARX150QI-3.3	IBR	5781	1550	3371	100NB
156	125X150	C3A-FMPRS-STD125X100ARX150QI3.85	IBR	5781	1550	3371	100NB
157	125X150	C3A-FMPRS-STD125X100ARX150QI-4.4	IBR	5781	1550	3371	100NB
158	125X150	C3A-FMPRS-STD125X100ARX150QI4.95	IBR	5781	1550	3371	100NB
159	125X150	C3A-FMPRS-STD125X100ARX150QI-5.5	IBR	5781	1550	3371	100NB
160	125X150	C3A-FMPRS-STD125X100ARX150QI-6.6	IBR	5781	1550	3371	100NB
161	125X200	C3A-FMPRS-STD125X100APX200QI-3.3	IBR	5882	1550	3371	100NB
162	125X200	C3A-FMPRS-STD125X100APX200QI3.85	IBR	5882	1550	3371	100NB
163	125X200	C3A-FMPRS-STD125X100APX200QI-4.4	IBR	5882	1550	3371	100NB
164	125X200	C3A-FMPRS-STD125X100APX200QI4.95	IBR	5882	1550	3371	100NB
165	125X200	C3A-FMPRS-STD125X100APX200QI-5.5	IBR	5882	1550	3371	100NB
166	125X200	C3A-FMPRS-STD125X100APX200QI-6.6	IBR	5882	1550	3371	100NB
167	125X200	C3A-FMPRS-STD125X100ARX200QI-3.3	IBR	5882	1550	3371	100NB
168	125X200	C3A-FMPRS-STD125X100ARX200QI3.85	IBR	5882	1550	3371	100NB
169	125X200	C3A-FMPRS-STD125X100ARX200QI-4.4	IBR	5882	1550	3371	100NB
170	125X200	C3A-FMPRS-STD125X100ARX200QI4.95	IBR	5882	1550	3371	100NB
171	125X200	C3A-FMPRS-STD125X100ARX200QI-5.5	IBR	5882	1550	3371	100NB
172	125X200	C3A-FMPRS-STD125X100ARX200QI-6.6	IBR	5882	1550	3371	100NB
173	150X200	C3A-FMPRS-STD150X100APX200QI-3.3	IBR	5980	1550	3371	100NB
174	150X200	C3A-FMPRS-STD150X100APX200QI3.85	IBR	5980	1550	3371	100NB
175	150X200	C3A-FMPRS-STD150X100ARX200QI-4.4	IBR	5980	1550	3371	100NB
176	150X200	C3A-FMPRS-STD150X100APX200QI4.95	IBR	5980	1550	3371	100NB
177	150X200	C3A-FMPRS-STD150X100APX200QI-5.5	IBR	5980	1550	3371	100NB
178	150X200	C3A-FMPRS-STD150X100ARX200QI-6.6	IBR	5980	1550	3371	100NB
179	150X200	C3A-FMPRS-STD150X100ARX200QI-3.3	IBR	5980	1550	3371	100NB
180	150X200	C3A-FMPRS-STD150X100ARX200QI3.85	IBR	5980	1550	3371	100NB
181	150X200	C3A-FMPRS-STD150X100APX200QI-4.4	IBR	5980	1550	3371	100NB
182	150X200	C3A-FMPRS-STD150X100ARX200QI4.95	IBR	5980	1550	3371	100NB
183	150X200	C3A-FMPRS-STD150X100ARX200QI-5.5	IBR	5980	1550	3371	100NB
184	150X200	C3A-FMPRS-STD150X100APX200QI-6.6	IBR	5980	1550	3371	100NB



**Class 300**

<b>SR NO</b>	<b>FMPRS SIZE</b>	<b>FMPRS FG CODE</b>	<b>TOTAL LENGTH (MM) (A)</b>	<b>TOTAL HEIGHT (MM) (B)</b>	<b>BYPASS LENGTH (MM) (C)</b>	<b>PRV SIZE</b>
1	20X25	C3A-FMPRS-STD20X15APX25MI1	2844	1100	1628	15NB
2	20X25	C3A-FMPRS-STD20X15ARX25MI1	2844	1100	1628	25NB
3	25X40	C3A-FMPRS-STD25X25APX40MI1	3180	1100	1770	25NB
4	25X40	C3A-FMPRS-STD25X25APX40MI2	3180	1100	1770	25NB
5	25X40	C3A-FMPRS-STD25X25ARX40MI1	3180	1100	1770	25NB
6	25X40	C3A-FMPRS-STD25X25ARX40MI2	3180	1100	1770	25NB
7	25X50	C3A-FMPRS-STD25X25APX50MI1	3180	1100	1770	25NB
8	25X50	C3A-FMPRS-STD25X25APX50MI2	3180	1100	1770	25NB
9	25X50	C3A-FMPRS-STD25X25ARX50MI1	3180	1100	1770	25NB
10	25X50	C3A-FMPRS-STD25X25ARX50MI2	3180	1100	1770	25NB
11	40X50	C3A-FMPRS-STD40X40APX50MI1	3838	1100	2269	40NB
12	40X50	C3A-FMPRS-STD40X40APX50MI2	3838	1100	2269	40NB
13	40X50	C3A-FMPRS-STD40X40APX50MI3	3838	1100	2269	40NB
14	40X50	C3A-FMPRS-STD40X40ARX50MI1	3838	1100	2269	40NB
15	40X50	C3A-FMPRS-STD40X40ARX50MI2	3838	1100	2269	40NB
16	40X50	C3A-FMPRS-STD40X40ARX50MI3	3838	1100	2269	40NB
17	40X65	C3A-FMPRS-STD40X40APX65MI1	3838	1100	2269	40NB
18	40X65	C3A-FMPRS-STD40X40APX65MI2	3838	1100	2269	40NB
19	40X65	C3A-FMPRS-STD40X40APX65MI3	3838	1100	2269	40NB
20	40X65	C3A-FMPRS-STD40X40ARX65MI1	3838	1100	2269	40NB
21	40X65	C3A-FMPRS-STD40X40ARX65MI2	3838	1100	2269	40NB
22	40X65	C3A-FMPRS-STD40X40ARX65MI3	3838	1100	2269	40NB
23	40X80	C3A-FMPRS-STD40X40APX80MI1	3838	1100	2269	40NB
24	40X80	C3A-FMPRS-STD40X40APX80MI2	3838	1100	2269	40NB
25	40X80	C3A-FMPRS-STD40X40ARX80MI1	3838	1100	2269	40NB
26	40X80	C3A-FMPRS-STD40X40ARX80MI2	3838	1100	2269	40NB
27	50X65	C3A-FMPRS-STD50X40APX65MI1	3895	1100	2269	40NB
28	50X65	C3A-FMPRS-STD50X40APX65MI2	3895	1100	2269	40NB
29	50X65	C3A-FMPRS-STD50X40ARX65MI1	3895	1100	2269	40NB
30	50X65	C3A-FMPRS-STD50X40ARX65MI2	3895	1100	2269	40NB
31	50X80	C3A-FMPRS-STD50X40APX80MI1	3996	1100	2269	40NB
32	50X80	C3A-FMPRS-STD50X40APX80MI2	3996	1100	2269	40NB
33	50X80	C3A-FMPRS-STD50X40ARX80MI1	3996	1100	2269	40NB
34	50X80	C3A-FMPRS-STD50X40ARX80MI2	3996	1100	2269	40NB
35	50X100	C3A-FMPRS-STD50X40APX100MI1	4095	1100	2269	40NB
36	50X100	C3A-FMPRS-STD50X40APX100MI2	4095	1100	2269	40NB
37	50X100	C3A-FMPRS-STD50X40ARX100MI1	4095	1100	2269	40NB
38	50X100	C3A-FMPRS-STD50X40ARX100MI2	4095	1100	2269	40NB
39	65X80	C3A-FMPRS-STD65X50APX80MI1	4142	1100	2533	50NB
40	65X80	C3A-FMPRS-STD65X50APX80MI-11	4142	1100	2533	50NB
41	65X80	C3A-FMPRS-STD65X50ARX80MI1	4142	1100	2533	50NB
42	65X80	C3A-FMPRS-STD65X50ARX80MI-11	4142	1100	2533	50NB
43	65X100	C3A-FMPRS-STD65X50APX100MI1	4342	1100	2533	50NB
44	65X100	C3A-FMPRS-STD65X50APX100MI-3.85	4342	1100	2533	50NB
45	65X100	C3A-FMPRS-STD65X50APX100MI-4.4	4342	1100	2533	50NB
46	65X100	C3A-FMPRS-STD65X50APX100MI-5.5	4342	1100	2533	50NB
47	65X100	C3A-FMPRS-STD65X50ARX100MI1	4342	1100	2533	50NB
48	65X100	C3A-FMPRS-STD65X50ARX100MI-3.85	4342	1100	2533	50NB
49	65X100	C3A-FMPRS-STD65X50ARX100MI-4.4	4342	1100	2533	50NB

SR NO	FMPRS SIZE	FMPRS FG CODE	TOTAL LENGTH (MM) (A)	TOTAL HEIGHT (MM) (B)	BYPASS LENGTH (MM) (C)	PRV SIZE
50	65X100	C3A-FMPRS-STD65X50ARX100MI-5.5	4342	1100	2533	50NB
51	65X125	C3A-FMPRS-STD65X50APX125MI-3.85	4342	1100	2533	50NB
52	65X125	C3A-FMPRS-STD65X50APX125MI-4.4	4342	1100	2533	50NB
53	65X125	C3A-FMPRS-STD65X50APX125MI-5.5	4342	1100	2533	50NB
54	65X125	C3A-FMPRS-STD65X50ARX125MI-3.85	4342	1100	2533	50NB
55	65X125	C3A-FMPRS-STD65X50ARX125MI-4.4	4342	1100	2533	50NB
56	65X125	C3A-FMPRS-STD65X50ARX125MI-5.5	4342	1100	2533	80NB
57	80X100	C3A-FMPRS-STD80X80APX100MI1	4920	1550	3006	80NB
58	80X100	C3A-FMPRS-STD80X80APX100MI2	4920	1550	3006	80NB
59	80X100	C3A-FMPRS-STD80X80ARX100MI1	4920	1550	3006	80NB
60	80X100	C3A-FMPRS-STD80X80ARX100MI2	4920	1550	3006	80NB
61	80X125	C3A-FMPRS-STD80X80APX125MI-3.85	4920	1550	3006	80NB
62	80X125	C3A-FMPRS-STD80X80APX125MI-4.4	4920	1550	3006	80NB
63	80X125	C3A-FMPRS-STD80X80APX125MI-6.6	4920	1550	3006	80NB
64	80X125	C3A-FMPRS-STD80X80ARX125MI-3.85	4920	1550	3006	80NB
65	80X125	C3A-FMPRS-STD80X80ARX125MI-4.4	4920	1550	3006	80NB
66	80X125	C3A-FMPRS-STD80X80ARX125MI-6.6	4920	1550	3006	80NB
67	80X150	C3A-FMPRS-STD80X80APX150MI-3.85	4921	1550	3006	80NB
68	80X150	C3A-FMPRS-STD80X80APX150MI-5.5	5121	1550	3006	80NB
69	80X150	C3A-FMPRS-STD80X80ARX150MI-3.85	4921	1550	3006	80NB
70	80X150	C3A-FMPRS-STD80X80ARX150MI-5.5	5121	1550	3006	80NB
71	100X125	C3A-FMPRS-STD100X80APX125MI-8.8	5230	1550	3006	80NB
72	100X125	C3A-FMPRS-STD100X80APX125MI-11	5430	1550	3006	80NB
73	100X125	C3A-FMPRS-STD100X80APX125MI-13.2	5430	1550	3006	80NB
74	100X125	C3A-FMPRS-STD100X80ARX125MI-8.8	5230	1550	3006	80NB
75	100X125	C3A-FMPRS-STD100X80ARX125MI-11	5430	1550	3006	80NB
76	100X125	C3A-FMPRS-STD100X80ARX125MI-13.2	5430	1550	3006	80NB
77	100X150	C3A-FMPRS-STD100X80APX150MI-3.3	5430	1550	3006	80NB
78	100X150	C3A-FMPRS-STD100X80APX150MI-3.85	5430	1550	3006	80NB
79	100X150	C3A-FMPRS-STD100X80APX150MI-4.4	5430	1550	3006	80NB
80	100X150	C3A-FMPRS-STD100X80APX150MI-6.6	5430	1550	3006	80NB
81	100X150	C3A-FMPRS-STD100X80ARX150MI-3.3	5430	1550	3006	80NB
82	100X150	C3A-FMPRS-STD100X80ARX150MI-3.85	5430	1550	3006	80NB
83	100X150	C3A-FMPRS-STD100X80ARX150MI-4.4	5430	1550	3006	80NB
84	100X150	C3A-FMPRS-STD100X80ARX150MI-6.6	5430	1550	3006	80NB
85	100X200	C3A-FMPRS-STD100X100APX200MI3.85	6093	1550	3569	100NB
86	100X200	C3A-FMPRS-STD100X100APX200MI-4.4	6093	1550	3569	100NB
87	100X200	C3A-FMPRS-STD100X100APX200MI-6.6	6093	1550	3569	100NB
88	100X200	C3A-FMPRS-STD100X100APX200MI-7.7	6093	1550	3569	100NB
89	100X200	C3A-FMPRS-STD100X100APX200MI-8.8	6093	1550	3569	100NB
90	100X200	C3A-FMPRS-STD100X100ARX200MI3.85	6093	1550	3569	100NB
91	100X200	C3A-FMPRS-STD100X100ARX200MI-4.4	6093	1550	3569	100NB
92	100X200	C3A-FMPRS-STD100X100ARX200MI-6.6	6093	1550	3569	100NB
93	100X200	C3A-FMPRS-STD100X100ARX200MI-7.7	6093	1550	3569	100NB
94	100X200	C3A-FMPRS-STD100X100ARX200MI-8.8	6093	1550	3569	100NB
95	125X150	C3A-FMPRS-STD125X100APX150MI3.85	6178	1550	3569	100NB
96	125X150	C3A-FMPRS-STD125X100APX150MI-4.4	6178	1550	3569	100NB
97	125X150	C3A-FMPRS-STD125X100APX150MI-6.6	6178	1550	3569	100NB
98	125X150	C3A-FMPRS-STD125X100APX150MI-7.7	6178	1550	3569	100NB

SR NO	FMPRS SIZE	FMPRS FG CODE	TOTAL LENGTH (MM) (A)	TOTAL HEIGHT (MM) (B)	BYPASS LENGTH (MM) (C)	PRV SIZE
99	125X150	C3A-FMPRS-STD125X100APX150MI-8.8	6178	1550	3569	100NB
100	125X150	C3A-FMPRS-STD125X100ARX150MI3.85	6178	1550	3569	100NB
101	125X150	C3A-FMPRS-STD125X100ARX150MI-4.4	6178	1550	3569	100NB
102	125X150	C3A-FMPRS-STD125X100ARX150MI-6.6	6178	1550	3569	100NB
103	125X150	C3A-FMPRS-STD125X100ARX150MI-7.7	6178	1550	3569	100NB
104	125X150	C3A-FMPRS-STD125X100ARX150MI-8.8	6178	1550	3569	100NB
105	125X200	C3A-FMPRS-STD125X100APX200MI3.85	6178	1550	3569	100NB
106	125X200	C3A-FMPRS-STD125X100APX200MI-4.4	6178	1550	3569	100NB
107	125X200	C3A-FMPRS-STD125X100APX200MI-6.6	6178	1550	3569	100NB
108	125X200	C3A-FMPRS-STD125X100APX200MI-7.7	6178	1550	3569	100NB
109	125X200	C3A-FMPRS-STD125X100APX200MI-8.8	6178	1550	3569	100NB
110	125X200	C3A-FMPRS-STD125X100ARX200MI3.85	6178	1550	3569	100NB
111	125X200	C3A-FMPRS-STD125X100ARX200MI-4.4	6178	1550	3569	100NB
112	125X200	C3A-FMPRS-STD125X100ARX200MI-6.6	6178	1550	3569	100NB
113	125X200	C3A-FMPRS-STD125X100ARX200MI-7.7	6178	1550	3569	100NB
114	125X200	C3A-FMPRS-STD125X100ARX200MI-8.8	6178	1550	3569	100NB
115	150X200	C3A-FMPRS-STD150X100APX200MI3.85	6293	1550	3569	100NB
116	150X200	C3A-FMPRS-STD150X100APX200MI-4.4	6293	1550	3569	100NB
117	150X200	C3A-FMPRS-STD150X100APX200MI-7.7	6293	1550	3569	100NB
118	150X200	C3A-FMPRS-STD150X100APX200MI-8.8	6293	1550	3569	100NB
119	150X200	C3A-FMPRS-STD150X100ARX200MI3.85	6293	1550	3569	100NB
120	150X200	C3A-FMPRS-STD150X100ARX200MI-4.4	6293	1550	3569	100NB
121	150X200	C3A-FMPRS-STD150X100ARX200MI-7.7	6293	1550	3569	100NB
122	150X200	C3A-FMPRS-STD150X100ARX200MI-8.8	6293	1550	3569	100NB

Given dimensional details are including the Moisture Separator and drain assembly as moisture separator comes as loose component which has to be assembled at the time of installation on site.

**Note:** For non-standard sizes and End connections contact nearest Forbes Marshall branch office or Head Office.



Size DN		End	Inlet Pressure (bar g)		Outlet Pressure (bar g)		Steam Flowrate (kg/hr)		End	Inlet Pressure (bar g)		Outlet Pressure (bar g)		Steam Flowrate (kg/hr)	
Inlet	Outlet	Connection	Max	Min	Max	Min	Max	Min	Connection	Max	Min	Max	Min	Max	Min
20	25	Class 150	10.5	7	4	3	200	30	Class 300	17.5	13	4.7	3	200	30
25	40	Class 150	10.5	7	6	3	450	75	Class 300	17.5	13	7.9	3	650	100
25	50	Class 150	10.5	7	6	3	450	75	Class 300	17.5	13	7.9	3	650	100
40	50	Class 150	10.5	7	6	2.5	1200	200	Class 300	17.5	13	11	3	800	150
40	65	Class 150	10.5	7	6	2.5	1200	200	Class 300	17.5	13	11	3	800	150
40	80	Class 150	10.5	7	6	2.5	1200	200	Class 300	17.5	13	7.9	3	1400	225
50	65	Class 150	10.5	7	4.7	2.5	1800	200	Class 300	17.5	13	11	3	1700	225
50	80	Class 150	10.5	7	4.7	2.5	1800	200	Class 300	17.5	13	11	3	1700	225
50	100	Class 150	10.5	7	4.7	2.5	1800	200	Class 300	17.5	13	11	3	1700	225
65	80	Class 150	10.5	7	8.5	3	1800	200	Class 300	17.5	13	11	8	2300	350
65	100	Class 150	10.5	7	8.5	3	2000	200	Class 300	17.5	10	5	3	2500	350
65	125	Class 150	10.5	7	4	3	2000	200	Class 300	17.5	10	5	3.5	2500	350
80	100	Class 150	10.5	7	8.5	3.5	3000	350	Class 300	17.5	10	11	5	4500	500
80	125	Class 150	10.5	8	4	3.5	4200	500	Class 300	17.5	10	6	3.5	4500	500
80	150	Class 150	10.5	8	4	3.5	4800	500	Class 300	17.5	10	5	3.5	4500	500
100	125	Class 150	10.5	8	4	3.5	4200	500	Class 300	17.5	14	12	8	6000	900
100	150	Class 150	10.5	8	4	3.5	4800	500	Class 300	17.5	10	6	3.5	6000	900
100	200	Class 150	10.5	8	4	3.5	6500	900	Class 300	17.5	11	8	3.5	7000	1000
125	150	Class 150	10.5	8	4	3.5	5500	900	Class 300	17.5	11	8	3.5	7000	1000
125	200	Class 150	10.5	8	4	3.5	6500	900	Class 300	17.5	11	8	3.5	7000	1000
150	200	Class 150	10.5	8	4	3.5	8000	900	Class 300	17.5	10	8	3.5	9500	1500

**Note:** The above mentioned FMPRS are of standard sizes with standard control valve size for the above mentioned range of parameters. For other non-standard sized parameters kindly contact nearest Forbes Marshall branch office or Head office.

### Installation

Kindly refer the Installation & Maintenance manual for detailed guidelines.

### How to order

Example: Forbes Marshall Pressure Reducing Station with Arca control valve Roboter based, FMPRS size Inlet - DN40 and Outlet – DN 50 with set pressures Inlet - 10 bar (g) & Outlet – 3 bar (g) for Steam Flow rates Max. 1200 kg/hr to Min. 200 kg/hr.

**Note:** Always specify inlet and outlet required set pressures and Max – Min steam flowrates while ordering the FMPRS.