

## Forbes Marshall Air Eliminator

### Description

The Forbes Marshall Air Eliminators, FMAE53, are ball float type air or gas eliminators used for liquid systems, with cast steel, cover and stainless steel internals.

### Size and Pipe Connections

DN 15, 20, 25

Screwed BSPT / NPT / socket weld able to ANSI B 16.11 / Flanged ANSI B 16.5 class 150,300,600, BS Table H, J, K, R, DIN PN 10,16,25 and 40

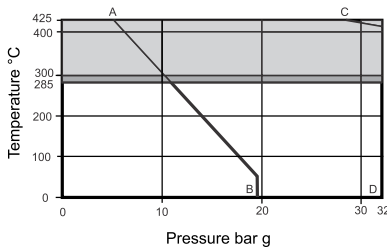
### Note:

1. DN 15 ASA 150 is available only with weld on flanges.
2. Flanges thickness is common for each size as shown in dimensional details.

### Limiting Conditions

FMAE53 4.5	Max. differential pressure of 4.5 bar g
FMAE53 10	Max. differential pressure of 10 bar g
FMAE53 13	Max. differential pressure of 13 bar g
FMAE53 21	Max. differential pressure of 21 bar g
FMAE53 32	Max. differential pressure of 32 bar g
Body design conditions	32 bar g @ 425 °C
Cold hydraulic test pressure	64 bar g

### Operating Range

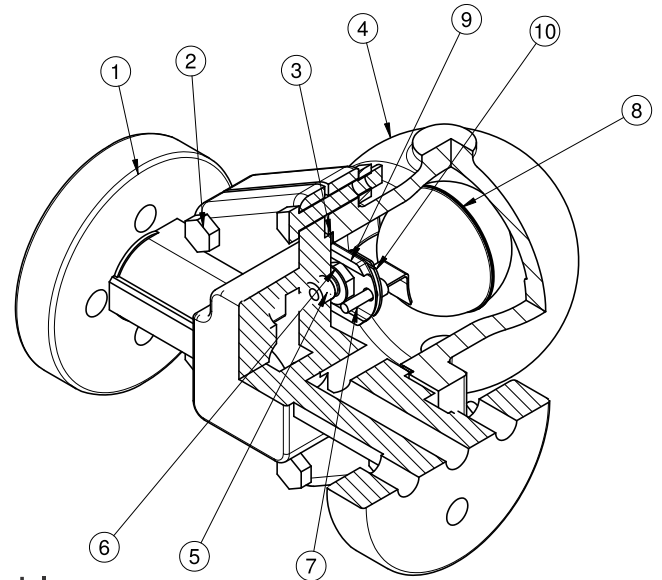


### Dimensions (approx.in mm) kg

#### Flanged

Size (DN)	A	B	C	D	E	T	Wt (kg)
DN15/20	230	68	84	172	120	21	11
DN25	240	119	88	225	160	24	30

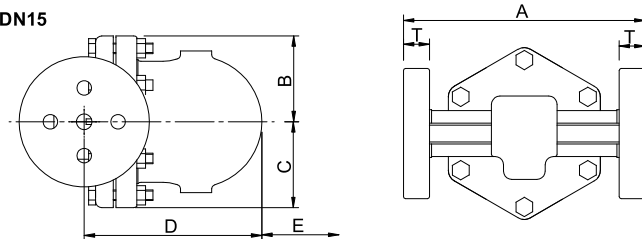
**Authorised Dealer;**  
Pushkarna Sales Pvt Ltd.  
4772, Hauz Qazi, Delhi-06.  
Telefax : 011-23216378/23217239.  
Email : sales@pushkarnasales.com  
Web : www.pushkarnasales.com  
KSB, FORBES MARSHALL, BRAY,  
VAAS Valves & Automation.



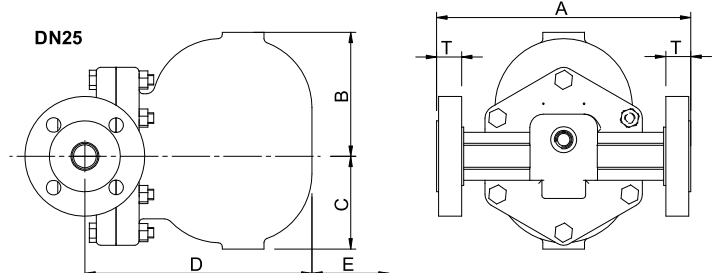
### Material

No	Part	Material	Standard
1	Base flanged Base screwed	Cast steel Forged carbon steel	ASTM A 216 Gr. WCB ASTM A 105
2	a)Cover bolts b)Cover Nuts	Carbon steel	H.T.IS 1367 Gr. 8.8
3	Cover	Gasket reinforced exfoliated graphite	
4	Cover	Cast steel	ASTM A 216 Gr. WCB
5	Valve seat	Stainless steel	ASTM A 743 Gr. CA 40
6	Valve seat	Gasket stainless steel	ASTM A 240 TYPE 304
7	Pivot frame assly, set screws	Stainless steel	IS 1364
8	Ball float & lever	Stainless steel Type304	ASTM A 240
9	Support frame	Stainless steel Type304	ASTM A 240
10	Pivot frame	Stainless steel Type304	ASTM A 240

#### DN15

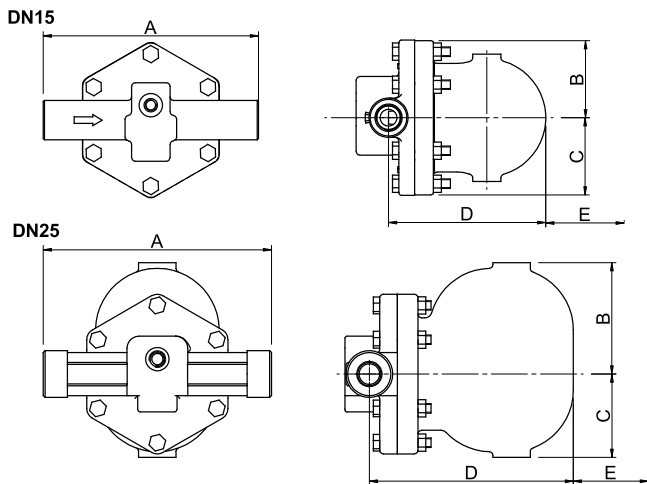


#### DN25



### Screwed/ Socket Weldable

Size (DN)	A	B	C	D	E	T	Wt(kg)
DN15/20	230	68	84	172	120	--	11
DN25	220	119	88	225	160	--	25



### How to Order

Example: 1 No. DN15 Forbes Marshall Air Eliminator, FMAE53, BSPT ends

### Installation

The arrow on the name plate must point downwards. The low point of the cover is provided with a 1/2" tapping for a balance pipe which is essential for satisfactory operation. The balance pipe must be connected between the inlet pipe and the tapping provided on the cover as shown in the sketch.

### Servicing

**Main Valve Assembly :** Unscrew cover bolts and lift off the cover. Remove complete float assembly by undoing the two screws on the frame, main valve and gasket and if damaged replace with a new one. Fit the support frame and pivot frame by using two screws but do not tighten it. Place the float arm and complete the assembly by placing the pin. Now tighten the set screws. Refit the cover.

### Spare Parts

The available spare parts are shown in below exploded figure. Mention traps size, type and differential pressure while ordering spares. For codes refer user manual.

### Available Spares

Main Valve Assembly with Float	A, B, C, D, E, F, G
Set Gasket (pkt of 3)	F
Float	C

### Recommended Tightening Torques

Part	Torque (Nm)
1. Valve Seat	45-55
2. Cover Bolts	25-35

